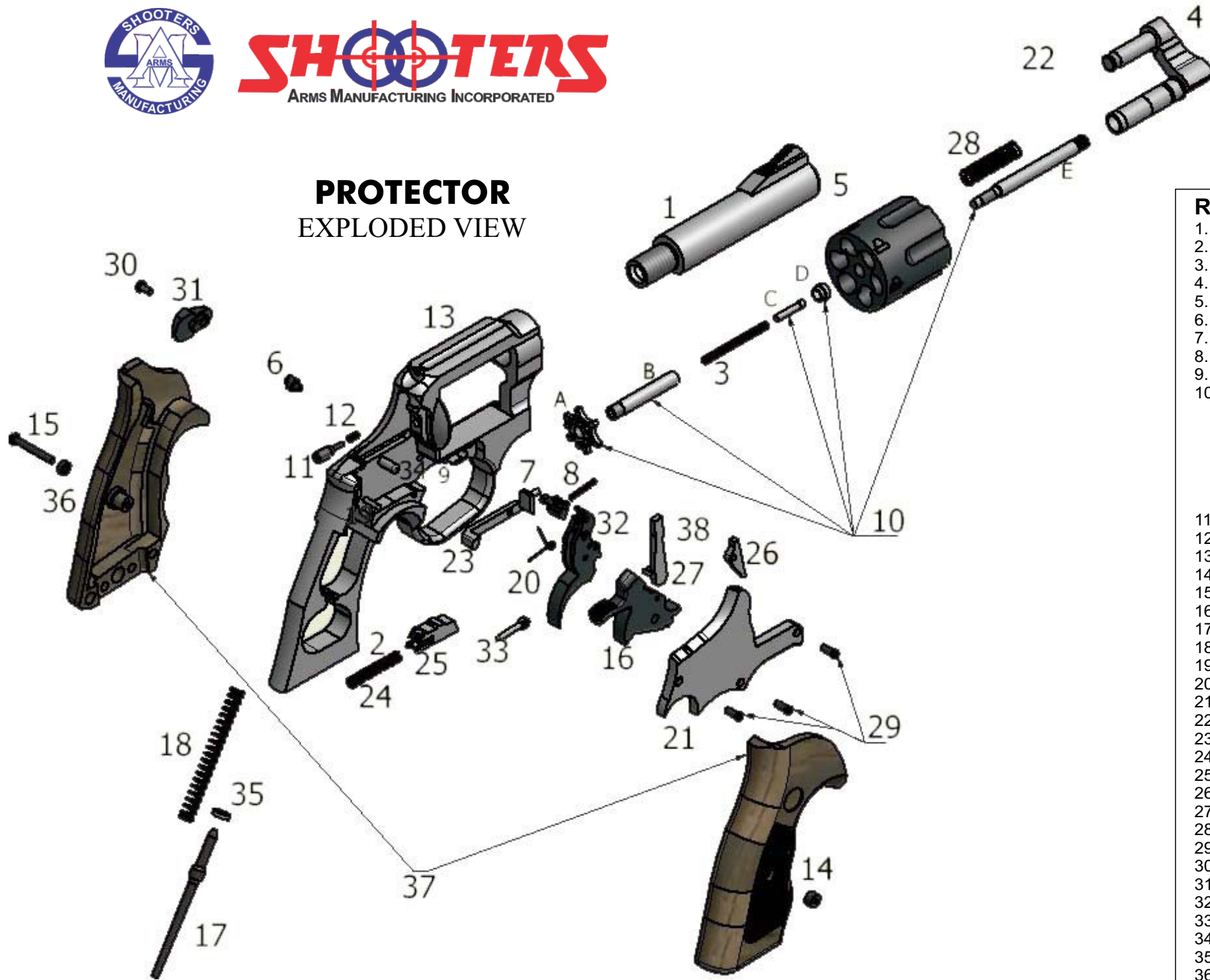




PROTECTOR
EXPLODED VIEW



Ref #	Name
1.	Barrel w/ sight
2.	Bolt Spring (Plunger Spring)
3.	Center Pin Spring
4.	Crane Link
5.	Cylinder (Tambor)
6.	Cylinder Block
7.	Cylinder Stop
8.	Cylinder Stop Spring
9.	Cylinder Stud
10.	Extractor w/ Star Set A.Star B.Extractor Bushing C.Center Pin D.Extractor rod Bushing E.Extractor rod
11.	Firing Pin
12.	Firing Pin Spring
13.	Frame
14.	Grip Cap
15.	Grip Screw (Pair)
16.	Hammer
17.	Hammer Guide
18.	Hammer Guide Spring
19.	Hammer Stud
20.	Hand Spring
21.	Slide Plate
22.	Pivot Pin
23.	Bolt
24.	Rebound Slide Spring
25.	Rebound Slide
26.	Pawl
27.	Pawl Spring
28.	Extractor Spring
29.	Stove Bolt
30.	Thumb Latch Screw
31.	Thumb Piece
32.	Trigger
33.	Trigger Lever
34.	Trigger Stud
35.	Hammer Guide Bushing
36.	Grip Washer
37.	Plastic Grip (Left & Right)
38.	Hand

PROTECTOR DISASSEMBLY PROCEDURE



1

STEP 1-Cylinder Removal 1

Remove the screw by using a flat screw driver.



2

STEP 2-Cylinder Removal 2

Press the thumb piece and gently push the cylinder to remove.



3

STEP 3-Plastic Grip Removal

Remove the screw of plastic grip by using a philip screwdriver, then remove the plastic grip.



4

STEP 4-Slide Plate Removal

Remove the screws of the slide plate and pull out the slide plate.



5

STEP 5-Hammer Guide Spring Removal

Pull the hammer guide spring upward, then remove it from the frame.



6

STEP 6-Hammer Removal

Press the trigger and remove the hammer from the frame.



7

STEP 7-Rebound Slide Spring Removal

Use a tool to remove the rebound slide spring by pressing forward to the trigger.



8

STEP 8-Trigger Removal

Press the hand by using a tool, then remove the trigger.